

Czech-Polish orienteering **Krnov** - **Pietrowice** 2013

3-day International Orienteering

SKOL CUP 2013

Partners



Euroregional Orienteering League 2013



Czech-Polish orienteering Krnov - Pietrowice 2013

3-day International Orienteering

BULLETIN 1

Organizers:

Klub orientačních sportů při TJ Lokomotiva Krnov (KRN)
Klub Biegacza Głubczyce
SVČ Média Krnov

Date of event:

June 28th – 30th 2013

Event center:

Autocamping Pietrowice, Poland (6 km north of Krnov)
GPS: 50°8'14.925"N, 17°41'22.308"E

Program:

Friday, June 28th	arrival, registration, accommodation, training 1. stage - sprint
Saturday, June 29th	2. stage - long distance afternoon program
Sunday, June 30th	3. stage - shortened long distance departure

Application:

For foreign participants via e-mail: jirina.hrouzova@skol.cz.
As an subject give **Entry SKOL CUP – XXX**. XXX = acronym of your club.
Application must include: Club name, Contact for the club coordinator
Names of the competitors
Classes, Numbers of SI-cards
Detailed calculation of entry fee
Requested type of accommodation
Request of rating SI-card

Please note, your entry is not valid until you receive confirmation.

Entry fees:

	up to June 16th, 2013		up to June 23rd, 2013		after June 23rd, 2013	
	3 stages	1 stage	3 stages	1 stage	3 stages	1 stage
DH10, DH12, DH10N	90	30	150	50	210	70
HDR	150	50	150	50	150	50
P3	150	50	180	60	210	70
DH14, DH65	240	80	280	100	380	150
DH16-55	270	90	360	150	450	200

All values are in Czech crowns (CZK)

Changing the start time within a category is possible according to the possibilities of the organizer. Applications after June 23rd are accepted only in number of vacancies.



Euroregional Orienteering League 2013



Czech-Polish orienteering Krnov - Pietrowice 2013

3-day International Orienteering

Payments:

Payments of deposits (entries and accommodation) should be sent to the bank account **184 526 7369/0800 (IBAN CZ29 0800 0000 0018 4526 7369, BIC/SWIFT GIBACZPX)**, to the textbox type the name of the club. After the June 24th pay in cash at the registration.

Registration:

1. stage center, Krnov, [GPS: 50°5'34.073"N, 17°41'55.731"E](#)

Friday June 28th, 2013 12:00 – 16:00

2. stage center, Las Głubczycki, [GPS: 50°13'55.822"N, 17°47'2.072"E](#)

Saturday June 29th, 2013 08:00 – 09:15

Event center/3. stage center, [GPS: 50°8'14.925"N, 17°41'22.308"E](#)

Sunday June 30th, 2013 07:00 – 08:15

Each club is registered by one representative.
For smooth registration, we ask you to come on time.

Classes:

H = men, D = women

H10, H12, H14, H16, H18, H21AB, H35, H45, H55, H65

D10, D12, D14, D16, D18, D21AB, D35, D45, D55, D65

DH10N – marked with stripes (unaccompanied), 1. stage without stripes

HDR – with accompanied (parents with children), unmarked

P3 – open category in difficulty D14

The organizer reserve the right to combine categories in the case of a low number of entries. Categories HDR and P3 have not fixed starting time and start by checking the Start station.

Courses:

According to the current [Competition rules MSKS OS, page 5.](#)

Winning times for shortened long distance = 60 % of long distance.

Distances:

Accommodation – Event center	up to 7 km
Event center – 1. stage center	5 km
Event center – 2. stage center	17 km
Event center – 3. stage center	0 km
Parking – Stage centers	up to 500 m
Stage center – Start	up to 2000 m
Stage center – Finish	up to 500 m

Accommodation:

Organizer **provides:**

Accommodation in the camp:

Tent: 210 CZK/person/stay

Brick cottage: 450 CZK/person/stay

Double and triple rooms, a total of 80 beds.



Euroregional Orienteering League 2013



Czech-Polish orienteering Krnov - Pietrowice 2013

3-day International Orienteering

Hotel: 500 CZK/person/stay

A total of 22 beds.

Camp will be open from Friday, June 28th 10:00 to Sunday, June 30th 16:00.

Accommodation in the school (900 m from the camp)

Bed: 350 CZK/person/stay

Six-to eight-bed rooms, a total of 50 beds.

Gym: 200 CZK/person/stay

Registration for accommodation send via e-mail jirina.hrouzova@skol.cz.

Payment send together with the entries.

The organizer **does not provide** another accommodation.

Transportation: The organizer does not provide transportation to each stage, use your own vehicles.

Start 00:

1. stage	17:00, interval start
2. stage	10:00, interval start
3. stage	09:00, interval start

Maps: **2. and 3. stage area has never been mapped and used for orienteering.**

1. stage

Krnov, scale 1:4 000, contour interval 2,5 m,
June 2013, revised by Tomáš Kopec, A4 format
Previous map: [Krnov 2007](#) (2007)

2. stage

Las Głubczycki, scale 1:15 000, contour interval 5 m,
June 2013, mapped by Jiří Sýkora, A4 format

3. stage

Radynia, scale 1:10 000, contour interval 5 m,
June 2013, mapped by Jiří Sýkora, A4 format

All maps will be waterproof, according to ISOM 2000 and ISSOM 2007.

Terrain:

1. stage – urban area 70 %, park area 30 %.
Part of the race will detail the map in scale 1:1000 with the maze.
2. stage – flat to slightly undulated terrain, varied composition of vegetation with different runnability, regular network of paths.
3. stage – foothill terrain with an altitude of 320 – 475 meters above sea. Prevails very well running deciduous forest without vegetation and terrain details, that is interspersed with sections of various running thickets and undergrowth. Occurrence of old mining shafts (sea mesh), pits, valleys, depressions, cliffs and knolls.



Euroregional Orienteering League 2013



Czech-Polish orienteering Krnov - Pietrowice 2013

3-day International Orienteering

- Training:** Hliniště, scale 1:2 500, contour interval 2 m, June 2012, mapped by Jiří Sýkora. Distance of 2 km from the Center E1 direction to Poland. On the map will be training controls. Maps will be available at the Center E1 for free (or voluntary contribution)
- Punching system:** Electronical punching system SPORTident. In case of failure SI use manual punching system on the map! Request for borrowing SI-card (40 CZK/1 stage) indicate in the application. If you lose the Si-card, you will be charged with a fee of 700 CZK. One SI-card cannot be used in the race more than once.
- Info, contact:** <http://www.koskrnov.cz/zavody/skol-cup-2013> - SKOL CUP 2013 website
Miroslav Kozelský, tel: 608 633 426, e-mail: mkozelsky@skol.cz
Jan Hrouza, tel: 603 259 298, e-mail: jan.hrouza@skol.cz
Pavel Rychlý, tel: 723 503 679, e-mail: paja.rychly@seznam.cz
- Protests:** According to the Orienteering rules to chief referee with a deposit 100 CZK. Against the official results to address Pavel Rychlý, Petrův důl 3, 794 01, Krnov.
- Results:** Overall ranking in each category will be determined based on the sum of the times of the three events.
- Winners ceremony:** After 1st and 2nd stage will be announced the winners of each category and all children in category HDR. After the 3rd stage the overall results will be announced; the first six in category in DH14 including, the first three in the other categories, all in category HDR. Category P3 will be not announced.
Winners will receive cups and diplomas, youth categories some extra sweetness.
- Sale of goods:** Sales of sporting equipment, snacks and other assortment will be possible only on the basis of an agreement with event director (the organizer).
- Kindergarten:** The organizer provides kindergarten.
- Caution:** All compete at their own risk. Free medical aid is provided only at the finish of all stages – Marie Žaloudíková, M.D. The subsequent medical care is paid from competitor's health insurance in their own account.
- Main event organizers:**
- | | |
|-----------------|------------------------|
| Event director: | Miroslav Kozelský |
| Chief referee: | Pavel Rychlý |
| Course setters: | 1. stage Jan Peths |
| | 2. stage Tomáš Kopec |
| | 3. stage Michal Zavřel |



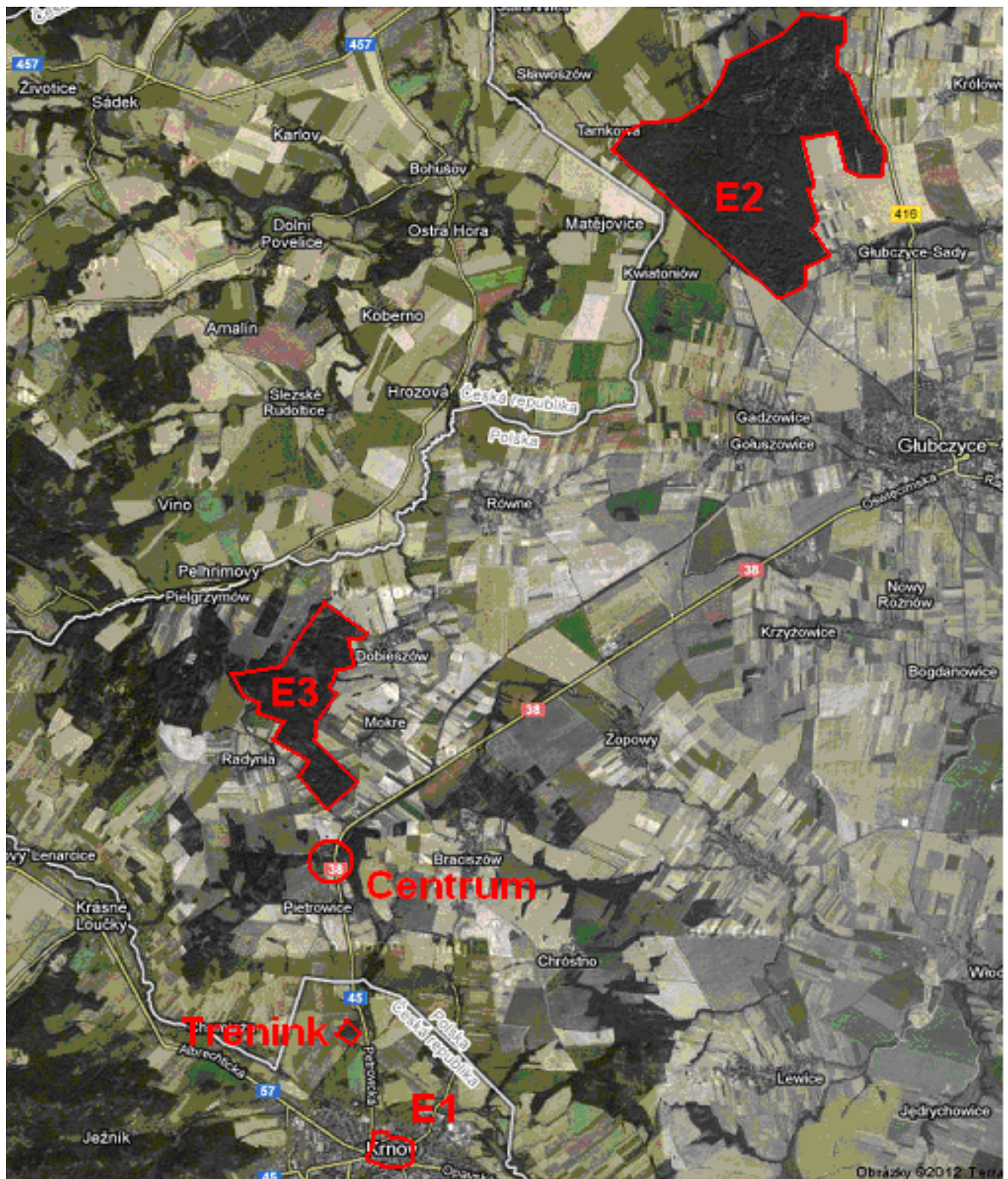
Euroregional Orienteering League 2013



Czech-Polish orienteering Krnov - Pietrowice 2013

3-day International Orienteering

Map of stages:



Euroregional Orienteering League 2013

